

# Air Separator Instruction Sheet

- (1.) Install Wheatley Air Separator in the system between Wheatley Expansion Tank(s) and pumps(s).
- (2.) Install Expansion Tank(s) as close to Air Separator as possible with any horizontal piping pitching up to tank.
- (3.) If a shut-off valve is installed in the line, it must be fully open when system is in operation.
- (4.) A connection for a Wheatley Air Release Valve is at the top of the Air Separator.

## Initial Start-up:

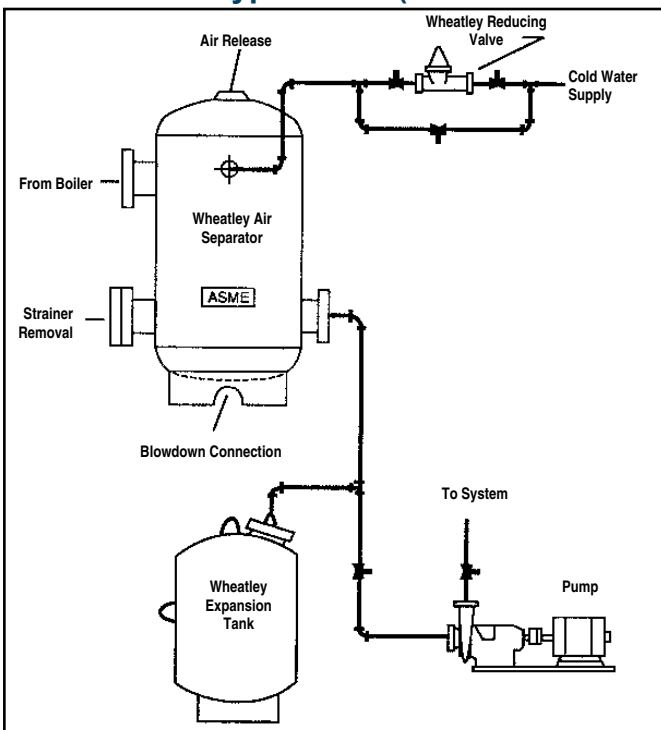
When system is first filled, release air from heating units and high points if necessary for quick filling. Any entrained air is separated continuously thereafter, as water is pumped through the Air Separator.

## Service:

When a strainer is specified, it is recommended that the installer remove and clean the strainer after 24 hours of operation and after 30 days of operation. Also, periodically open blowdown valve to purge Air Separator of foreign particles.

## Typical Piping Details

### With Bladder Type Tanks (WPA/WFA Series)



### Typical Specification:

Furnish and install on plans a tangential air separator consisting of a steel tank \_\_\_\_" diameter by \_\_\_\_" long.

The air separator shall have \_\_\_\_" (NPT/Flanged) tangential inlet and outlet connections. The air separator can also be equipped with an optional, removable stainless steel strainer with 3/16" diameter perforations. When a strainer is specified, installer shall remove and clean the strainer after 24 hours operation and after 30 days operation. There shall be a bottom connection for routine blowdown cleaning of the unit.

The air separator must be constructed and stamped for 125 psig in accordance with the ASME Boiler and Pressure Vessel Code.

Each air separator shall be American Wheatley HVAC Products \_\_\_\_\_ or equal.

### With Plain Steel Tanks (WPS Series)

