

# Vertical Blowdown Tank

The Wheatley VBD Series vertical blowdown tank is designed to reduce the temperature and pressure of oiler blowdown water to a safe level where it can be expelled to a municipal sewer system drain. Equipped with a tangential inlet and a wear plate, as the boiler blowdown water enters the VBD it flashes to steam, condensate then flows into the VBD while the flash steam is vented through a top vent. As the condensate level rises, it reached the outlet port and flows to drain. In the case where the condensate is too hot\* to safely be discharged to the municipal sewer system, American Wheatley can supply an optional Temperature Control Valve that can introduce city water into the tank to cool the condensate. When sizing a VBD blowdown vessel, the tank size should be equal to 2X a single blowdown cycle water volume of the boiler, whereas the boiler water level is reduced by not less than 4" minimum.

Example: One blowdown cycle expels 25 gallons of blowdown water 25 gallons x 2= 50 gallon VBD required.

\*Check with your local municipality for acceptable temperature limit.

## Features:

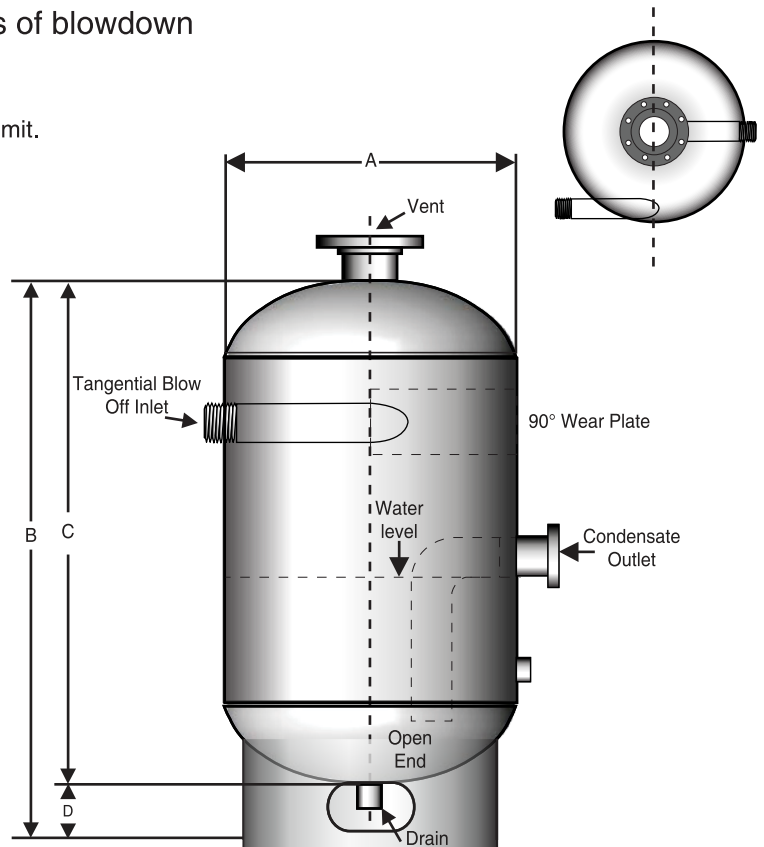
- ASME Section VIII, Division 1, Latest Edition construction, 125 psi
- Tangential inlet with wear plate

## Optional Features:

- Higher working pressures available
- Temperature control valve to maintain proper blowdown temperature
- Gauge glass
- Man-way (standard on 42" diameter and larger)
- Painted Exterior, Epoxy Coatings

All packaging materials, thread protectors, plastic plugs and caps must be removed before installation.

Dimensions are subject to change without notice, please confirm actual dimensions with factory at time of order.



JOB NAME _____
LOCATION _____
_____
_____
CONTRACTOR _____
CONTRACTOR P.O. NO. _____

ITEMS	QUANTITY
_____	_____
_____	_____
_____	_____
_____	_____
_____	_____
_____	_____

**American WHEATLEY**  
HVAC PRODUCTS®  
A GFP COMPANY

2701 W. Concord Street  
Broken Arrow, OK 74012  
Toll Free: 866-204-5229  
PH: 918-317-0401  
FAX: 918-317-0407  
www.wheatleyhvac.com  
e-mail: sales@globalflowproducts.com

PART NUMBER	CAPACITY VOLUME GALLONS	DIA. A (IN.)	TOTAL HGT B (IN.)	TANK HGT C (IN.)	DRAIN TO FLOOR D (IN.)	VENT (IN.)	INLET (IN.)	OUTLET (IN.)	DRAIN (IN.)	COLD WATER (IN.)
VBD-030	30	16"	48"	36"	12"	2 1/2" NPT	3/4" NPT	2" NPT	1"	1/2" NPT
VBD-050	50	20"	54"	42"	12"	2 1/2" NPT	3/4" NPT	2" NPT	1"	1/2" NPT
VBD-087	87	24"	60"	48"	12"	3" NPT	1" NPT	2" NPT	1"	1/2" NPT
VBD-140	140	30"	60"	48"	12"	3" NPT	1 1/4" NPT	2" NPT	1"	3/4" NPT
VBD-215	215	36"	66"	54"	12"	5" FLG.	1 1/2" NPT	2 1/2" NPT	1 1/2"	3/4" NPT
VBD-320	320	42"	72"	60"	12"	5" FLG.	2"	3" NPT	1 1/2"	3/4" NPT
VBD-455	455	48"	78"	66"	12"	6" FLG.	2 1/2"	4" FLG	1 1/2"	1" NPT
VBD-620	620	54"	84"	72"	12"	8" FLG.	3"	5" FLG	1 1/2"	1" NPT
VBD-815	815	60"	90"	78"	12"	10" FLG.	4"	6" FLG	1 1/2"	1" NPT

Shown with optional features

