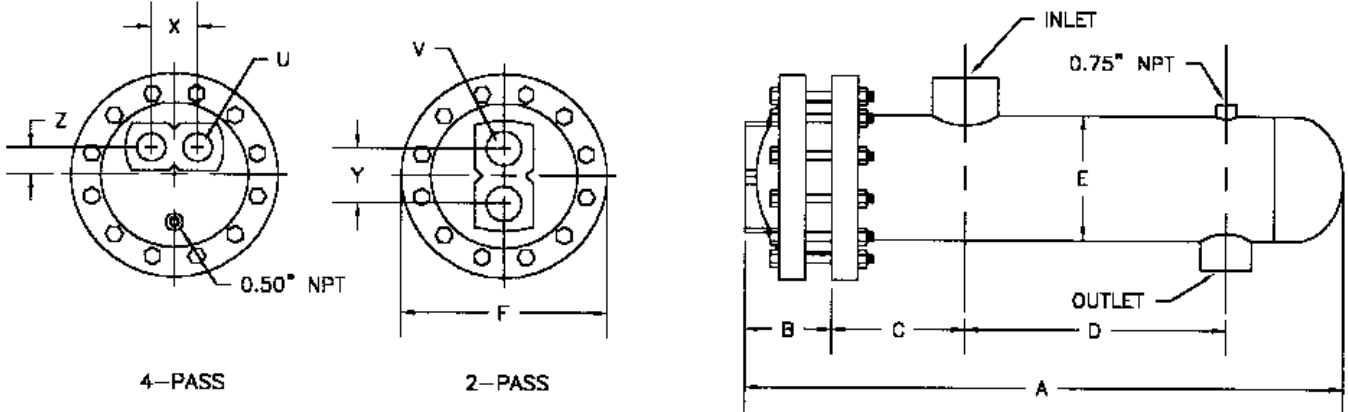


WHEATLEY®

HVAC PRODUCTS

SUBMITTAL DATA

6" DIA. STEAM TO WATER
U-TUBE HEAT EXCHANGER



MODEL NO.	HEAT EXCHANGER								2 PASS		4 PASS				
	A	B	C	D	E	F	INLET	OUTLET	Y	V	SQ. FT.	X	Z	U	SQ. FT.
S624(*)A	30.01			12.75							8.0				8.0
S636(*)A	42.01			24.75							12.8				12.8
S648(*)A	54.01			36.75							17.6				17.6
S660(*)A	66.01			48.75							22.4				22.4
S672(*)A	78.01	3.13	6.00	60.75	6.63	11.00	3" NPT	1.5" NPT	3.75	2" NPT	27.1	2.69	1.25	1.5" NPT	27.1
S684(*)A	90.01			72.75							31.9				31.9
S696(*)A	102.01			84.75							36.7				36.7
S6108(*)A	114.01			96.75							41.5				41.5
S6120(*)A	126.01			108.75							46.3				46.3

(*) INSERT NUMBER OF PASSES.

MATERIALS OF CONSTRUCTION

PART	MATERIAL
HEAD	CAST IRON
SHELL	STEEL
TUBE SHEET	STEEL
TUBING	3/4" O.D. COPPER
BAFFLES	STEEL
CAGE MATERIAL	STEEL

DESIGNED & CONSTRUCTED PER ASME SECT VIII DIV 1

MAXIMUM OPERATING CONDITIONS

TUBE SIDE WORKING PRESSURE	150 PSI
SHELL SIDE WORKING PRESSURE	150 PSI
HYDROSTATIC TEST PRESSURE TUBE SIDE	300 PSI
HYDROSTATIC TEST PRESSURE SHELL SIDE	225 PSI
MAXIMUM TEMPERATURE TUBE SIDE	375°F
MAXIMUM TEMPERATURE SHELL SIDE	375°F

JOB NAME _____	MODEL NO. ORDERED _____	
LOCATION _____	STEAM PRESSURE _____	
ENGINEER _____	ENT TEMP. _____	LEAV TEMP _____
CONTRACTOR _____	TUBE SIDE FLOW _____	LIQUID _____
SALES REP. _____	FOULING FACTOR _____	SQ FT _____
SBCI.DWG REV. A	TUBE SIDE PRESSURE DROP _____ FT	VELOCITY _____ FT/SEC