



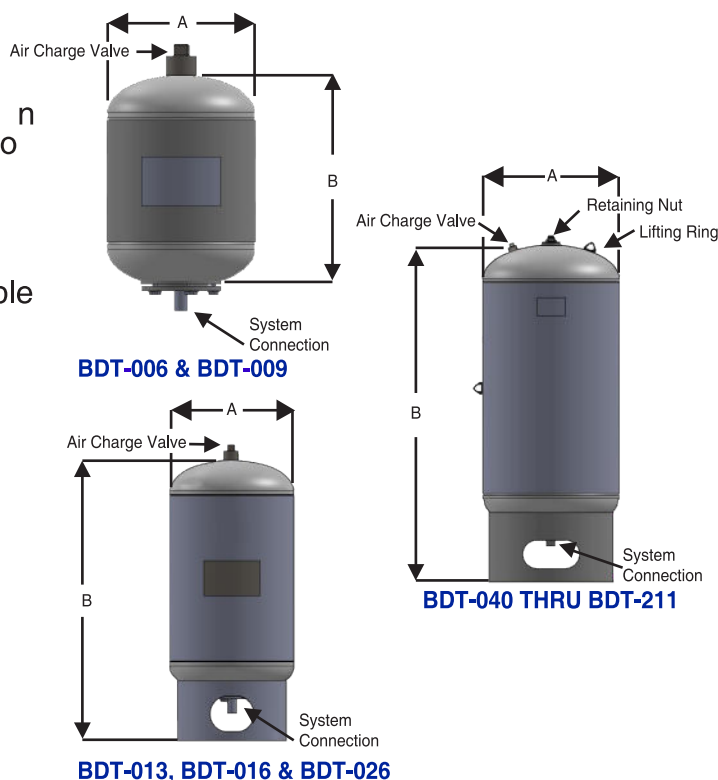
BDT Series ASME “Multi-Purpose” Expansion Tank

Features:

- Constructed in accordance with ASME Section VIII, Division I, Latest Edition
- Stainless Steel System Connection
- EPDM Bladder
- Full Acceptance Bladder Design / Replaceable
- Factory Air Charged to 12 P.S.I.
- Maximum Temperature 280°F Intermittent
- Constructed of NSF 61 Compliant Materials
- Primed Exterior

Optional Features:

- Higher working pressures available
- Top entry
- “Bulls Eye” sight glass
- Seismic mounting (clips or legs)
- Painted Exterior, Epoxy Coatings



PART NUMBER	ACCEPTANCE VOLUME	DIAMETER A (IN.)	HEIGHT B (IN.)	SYSTEM CONNECT (IN.)	WEIGHT	WORKING PRESSURE
BDT-006	6 GALLON	12	12	3/4"	24	150 PSI
BDT-009	9 GALLON	12	17	3/4"	28	150 PSI
BDT-013	13 GALLON	14	28	3/4"	50	150 PSI
BDT-016	16 GALLON	14	32	3/4"	65	150 PSI
BDT-026	26 GALLON	16	40	3/4"	98	150 PSI
BDT-040	40 GALLON	20	41	1"	140	150 PSI
BDT-060	60 GALLON	24	48	1 1/2"	220	150 PSI
BDT-080	80 GALLON	24	50	1 1/2"	235	150 PSI
BDT-112	112 GALLON	30	52	1 1/2"	273	150 PSI
BDT-135	135 GALLON	30	59	1 1/2"	340	150 PSI
BDT-162	162 GALLON	30	61	1 1/2"	360	150 PSI
BDT-185	185 GALLON	30	80	1 1/2"	545	200 PSI
BDT-211	211 GALLON	32	71	1 1/2"	480	150 PSI

All packaging materials, thread protectors, plastic plugs and caps must be removed before installation. Dimensions are subject to change without notice, please confirm actual dimensions with factory at time of order.



2701 W. Concord Street
Broken Arrow, Ok 74012
Toll Free: 866-204-5229 | PH: 918-317-0401 | FAX: 918-317-0407
www.wheatleyhvac.com | sales@globalflowproducts.com



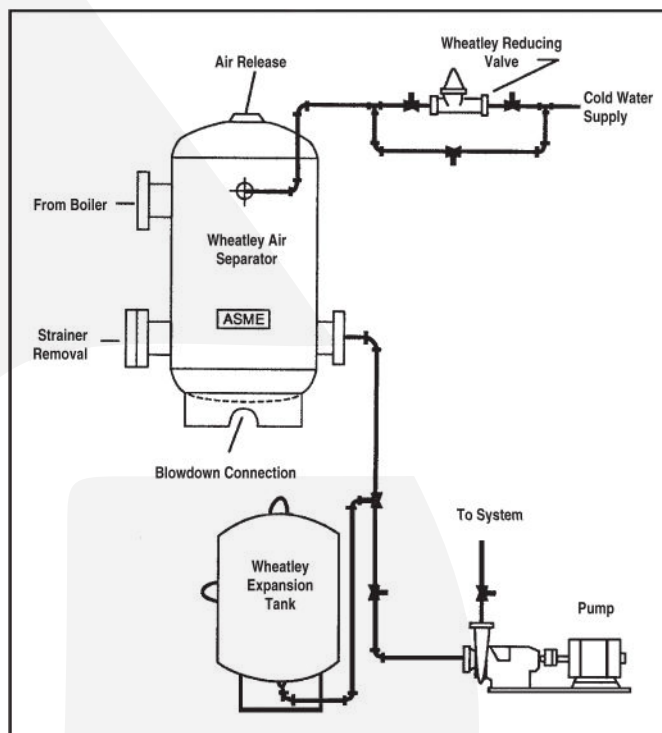
USE:

Designed to absorb expansion of fluids in typical hydronic systems. The BDT Tank is designed for pressure boost systems as well as typical cooling and heating applications. Bladder material is suitable for hot water applications. Installation of the tank will help eliminate constant pump use, prolonging pump life and unnecessary blowing of relief valves.

Specifications:

Furnish and install and shown on plans, American Wheatley BDT series, full acceptance expansion tank. Tank shall be constructed of carbon steel in accordance with ASME Section VIII, Division 1, latest edition. Tank shall incorporate a removable and replaceable heavy duty EPDM bladder. Tank shall be supplied with 12 psi factory air charge. Tanks shall be supplied on standard base ring unless otherwise specified. Tanks shall be constructed and ASME stamped for 150 psi working pressure at 240°F. Tanks shall be supplied with exterior high grade red oxide primer finish. Vertical or horizontal installation is acceptable. Non-replaceable diaphragm type tanks are not acceptable.

Typical Piping Details With Bladder Type Tanks (BDT Series)



2701 W. Concord Street
Broken Arrow, Ok 74012
Toll Free: 866-204-5229 | PH: 918-317-0401 | FAX: 918-317-0407
www.wheatleyhvac.com | sales@globalflowproducts.com